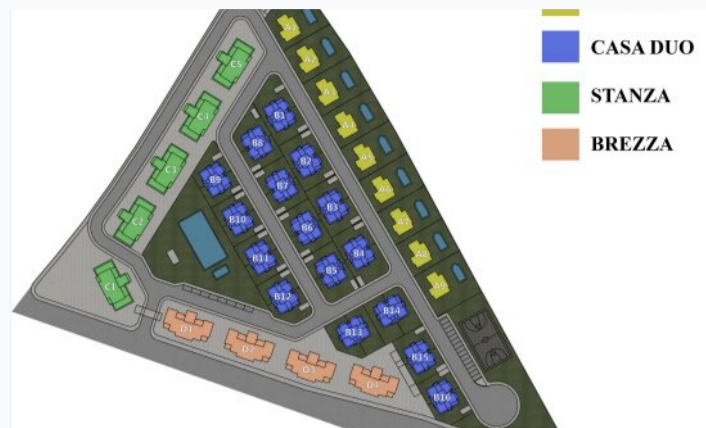
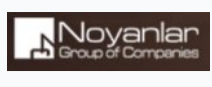


La Palazzo residential complex

Location **Iskele, Kalecik**



About the project



Developer	Noyanlar
Start of sale	01.06.2023
Key handover	2026
Houses/blocks	34
Building floor	2 Min 6 Max
Units total	9 - 4+1, 32 - 3+1, 50 - 2+1, 3+1 Apt/1+1 Penthouse, 32 - 2+1 /3+1 Apt
Distance to the sea -	900 m
Distance to key locations:	Airport 50 km. Supermarket 6 km. School 8 km. Kindergarten 10 km. Hospital 11 km. Shopping center 12 km.

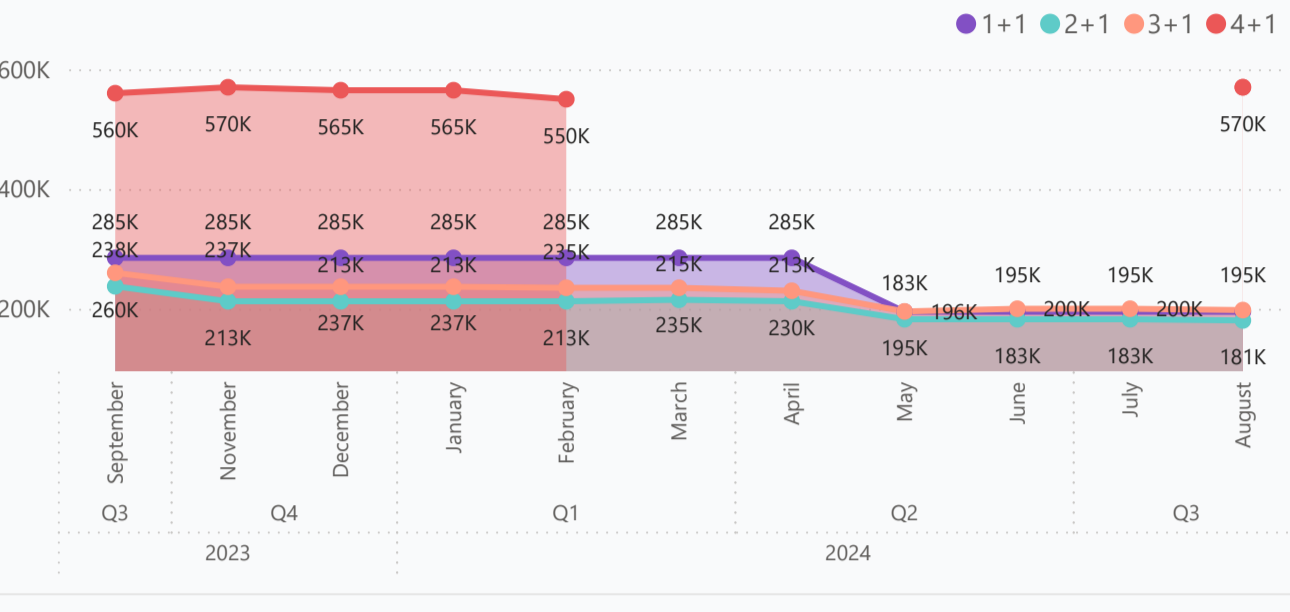
Located in the heart of Cyprus, La Palazzo combines luxury and comfort, transforming the modern lifestyle into a unique experience. Surrounded by the cool breezes and unique beauties of the Mediterranean, this project promises a life that embraces those who meet La Palazzo. The project's architecture perfectly combines contemporary details with the traditional elegance of Cyprus. La Palazzo was designed with an aesthetic approach that reflects the splendor of a palace. The buildings, thought out to the smallest detail, are surrounded by special landscaping and large green areas.

Complex infrastructure

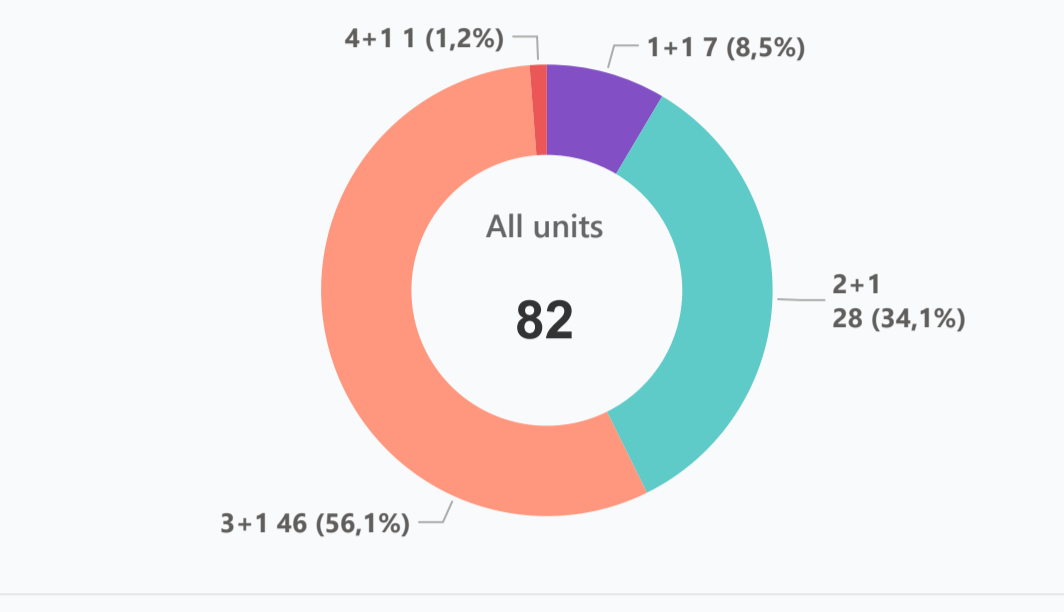
- Automatic Entrance Gate
- BBQ area
- Cafe
- Kid's playground
- Open pool

Available units 82 / 124 total

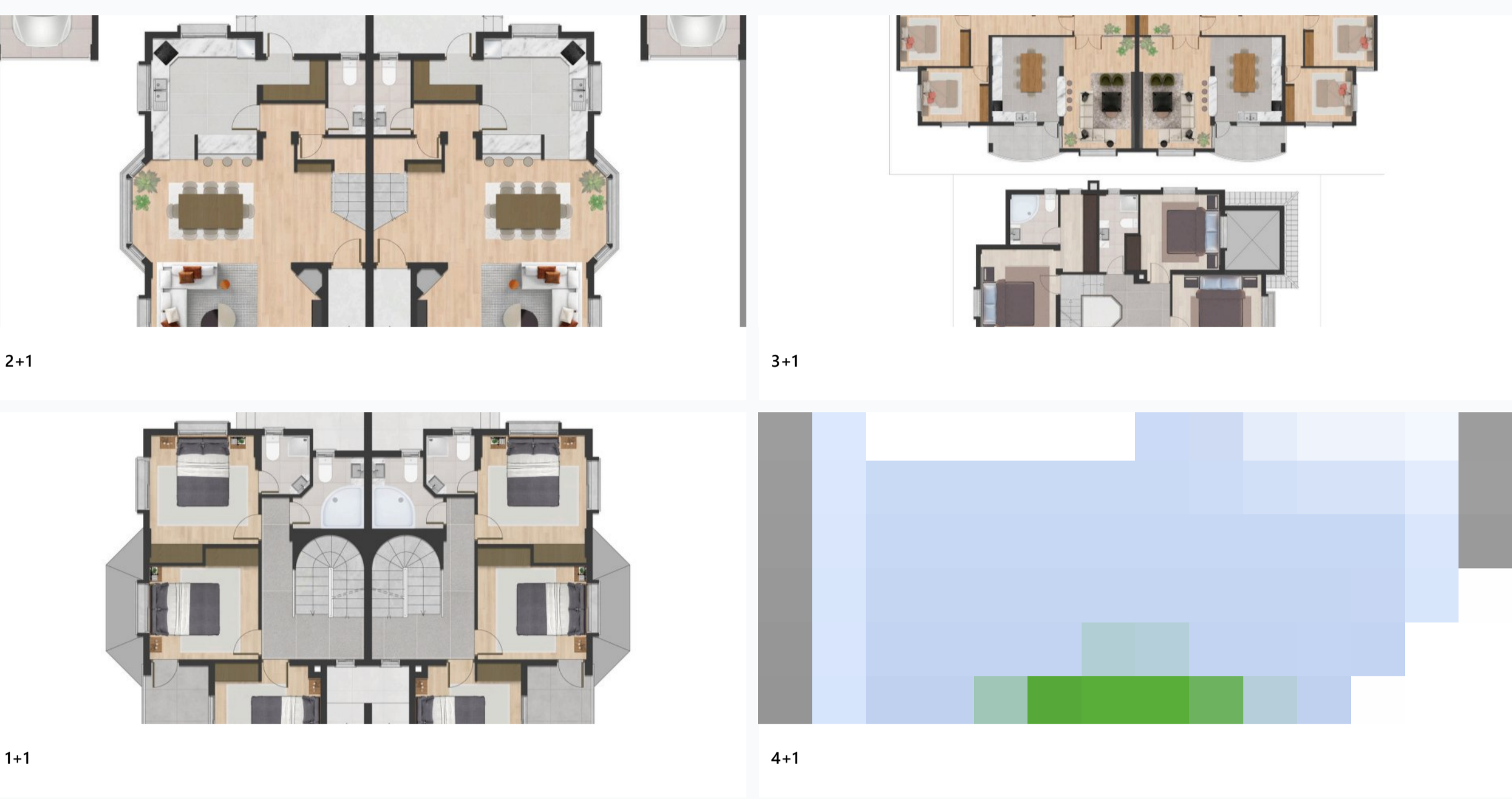
Median price per unit, K GBP



Structure of available units



Plans



Payment plans

Deposit (non-refundable) Min 1500 GBP for 15 days

Option	Down payment	Installments months	Discount	Offer
Option 1	30%	30% till key, 40%...	-	-
Option 2	30%	3-6 months	5% if cash payment	-
Option 3	50%	3-6 months	5%	-
Option 4	-	-	-	-

Special offer

Fully furnished design package

Rental guarantee

Trafo 2500 GBP

Resale -

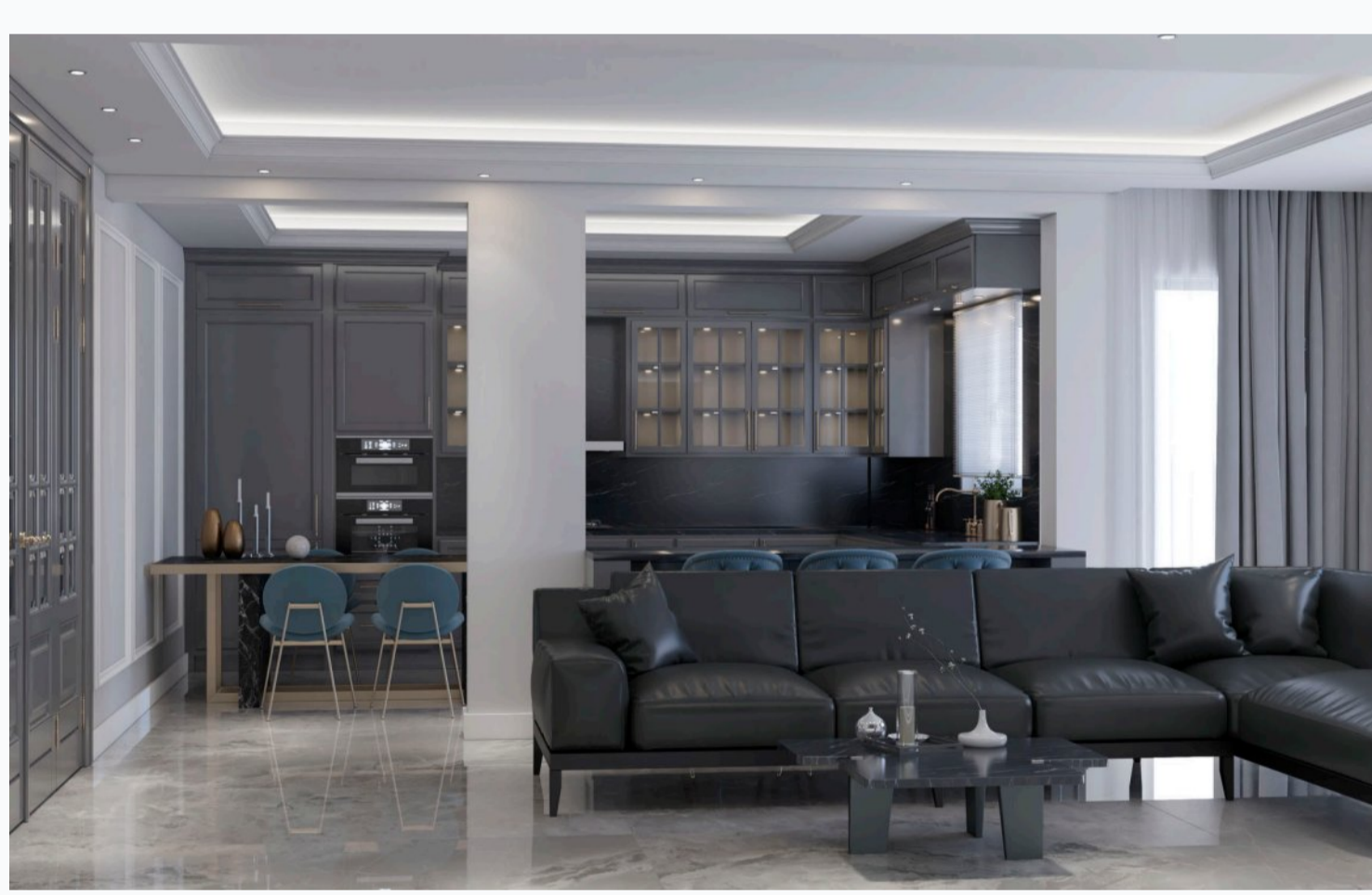
Maintenance fee 50-150 GBP monthly

Rental services -

Details

Bedrooms	Subtype	Block	Unit №	Floor	View	Bathroom	Internal area, sq. m	Balcony/Terrace, sq. m	Rooftop terrace, sq. m	Garden, sq. m	Gross covered area, sq. m	Current price, GBP	Price per sqm, GBP
1+1	Penthouse	Stanza Block 2	9	05		2	69	50			119	200 000	1 681
1+1	Penthouse	Stanza Block 3	10	05		2	69	50			119	200 000	1 681
1+1	Penthouse	Stanza Block 3	9	05		2	69	50			119	200 000	1 681
1+1	Penthouse	Stanza Block 4	10	05		2	69	50			119	195 000	1 639
1+1	Penthouse	Stanza Block 4	9	05		2	69	50			119	195 000	1 639
1+1	Penthouse	Stanza Block 5	10	05		2	69	50			119	195 000	1 639
1+1	Penthouse	Stanza Block 5	9	05		2	69	50			119	195 000	1 639
2+1	Flat	Brezza Block 1	5	03		2	108	24			132	183 000	1 386
2+1	Flat	Brezza Block 1	6	03		2	108	24			132	183 000	1 386
2+1	Flat	Brezza Block 1	7	04		2	108	12			120	183 000	1 525
2+1	Flat	Brezza Block 1	8	04		2	108	12			120	183 000	1 525
2+1	Flat	Brezza Block 2	5	03		2	108	24			132	183 000	1 386
2+1	Flat	Brezza Block 2	6	03		2	108	24			132	183 000	1 386
2+1	Flat	Brezza Block 2	7	04		2	108	12			120	183 000	1 525
2+1	Flat	Brezza Block 2	8	04		2	108	12			120	183 000	1 525
2+1	Flat	Brezza Block 3	5	03		2	108	24			132	174 000	1 318
2+1	Flat	Brezza Block 3	6	03		2	108	24			132	178 500	1 352
2+1	Flat	Brezza Block 3	5	03		2	108	24			132	178 500	1 352
2+1	Flat	Brezza Block 4	6	03		2	108	24			132	178 500	1 352
2+1	Flat	Stanza Block 1	5	03		2	108	24			132	182 500	1 383
2+1	Flat	Stanza Block 1	6	03		2	108	24			132	182 500	1 383
2+1	Flat	Stanza Block 1	7	04		2	108	12			120	182 500	1 521
2+1	Flat	Stanza Block 1	8	04		2	108	12			120	182 500	1 521
2+1	Flat	Stanza Block 2	6	03		2	108	24			132	178 500	1 352
2+1	Flat	Stanza Block 2	5	03		2	108	24			132	183 000	1 386
2+1	Flat	Stanza Block 2	8	04		2	108	12			120	178 500	1 488
2+1	Flat	Stanza Block 2	7	04		2	108	12			120	183 000	1 525
2+1	Flat	Stanza Block 3	7	04		2	108	12			120	174 000	1 450

Interior specification



Interior specification

- Ceramic flooring
- Double glazed windows
- Laminate flooring in the bedrooms

Exterior specification



Exterior specification

- Glass fence balcony
- Private pool
- Terracing with inbuilt lighting & power sockets

Location of complex

